

SOCAGE

185



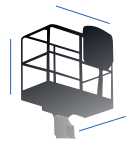
18,30 m



230 Kg



16,30 m



1400x700x1100 mm



8,20 m



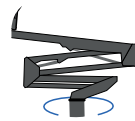
ALLUMINIO
ALUMINIUM



Z + Z



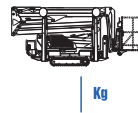
ELETTRONICO
ELECTRICAL



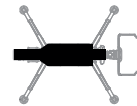
400°



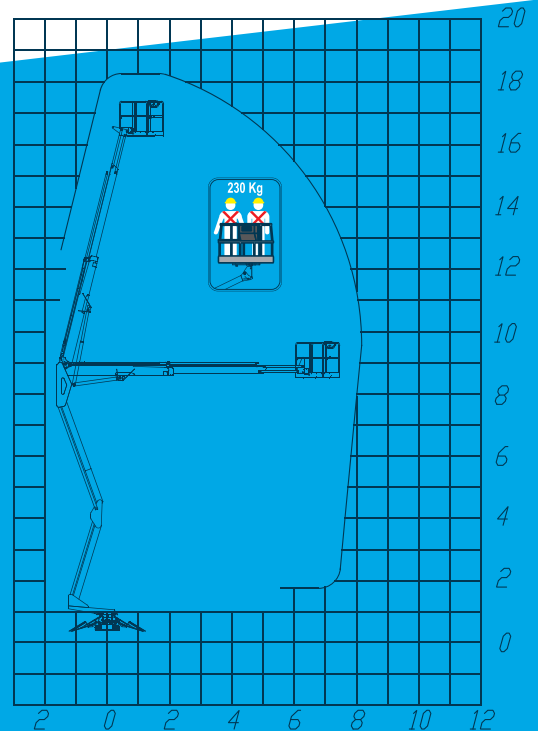
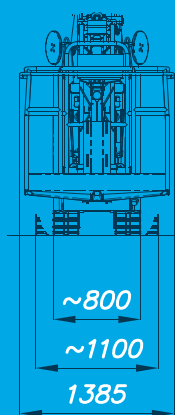
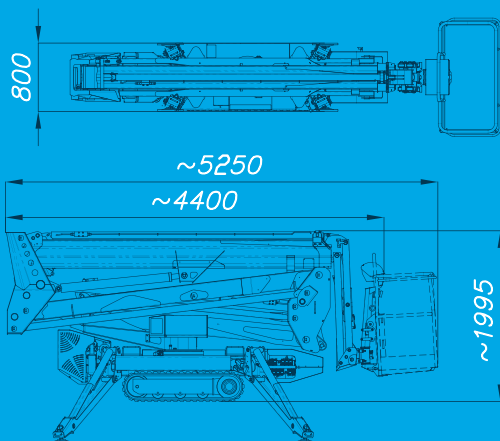
60° + 60°



2,5 t



2850x2850 mm



Equipaggiamento di serie / Standard equipment

- Carro allargabile idraulicamente - Crawler hydraulically extensible (780 - 1100 mm)
- Cingoli antitraccia bianchi - White antimark tracks
- Contaore elettrico - Electric hour-counter
- Elettropompa ausiliaria 230V-50Hz - Auxiliary electric pump 230V-50Hz
- Limitatore di peso sul cestello - Weight limiter on basket
- Motore diesel - Diesel engine
- Piastre supplementari - Spreader pads
- Pompa di emergenza manuale - Manual hand pump
- Preso aria/acqua - Air/water connection
- Preso elettrica 230 V nel cesto - 230 V electric socket in the basket
- Telecomando multifunzione - Multifunction telecontrol
- Valvole di blocco flangiate - Flanged holding valves
- Stabilizzazione automatica - Automatic stabilization
- Chiusura automatica - Automatic closing
- Traslazione cingoli con 3 velocità - Track translation with 3 speeds
- Rotazione cestello 60° + 60° - Basket rotation 60° + 60°

Optional

- Faro orientabile - Rotating lamp
- Radiocomando multifunzione - Radio remote control
- Verniciatura speciale parte aerea - Special painting aerial part
- Verniciatura speciale telaio - Special painting chassis
- Adesivazione personalizzata - Customized stickers
- Cinture di sicurezza - Seat belt (each)